

BOTTLE CHUCK

Bottle Chuck

Don't scratch and
hold firmly



High-precision bottle handling

CHB520series

NKE Corporation

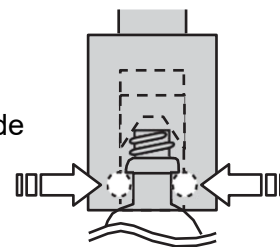
Feature

Want to use the bottle which is easily damaged

When using CHB520 series

No damage !

The ball which hold bottle is made of plastic. It doesn't damage the bottle.



Want to move faster

When using CHB520 series

Stable !

Bottle is fixed by center push which is built in the upper of chuck. This chuck is suitable for high speed movement with high performance positioning.

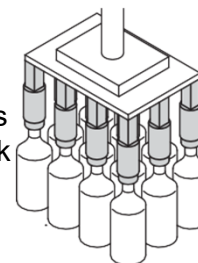


Want to grab many bottles at one time

When using CHB520 series

Light and slim !

Bottle is fixed by center push which is built in the upper of chuck. This chuck is suitable for high speed movement with high performance positioning.



Want to use various bottles

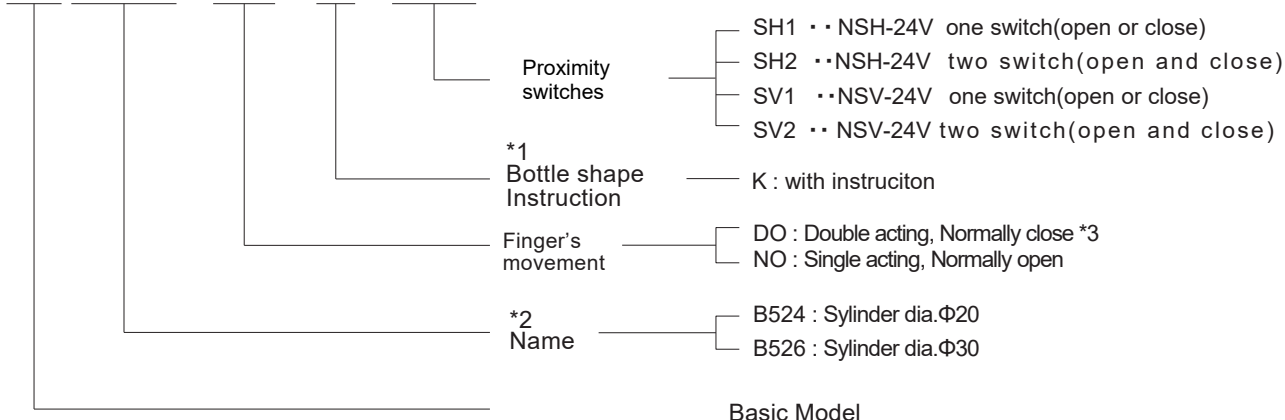
When using CHB520 series

Enable to customize !

We can customize the bottle chuck besides the customer's circumstances to offer bottle handling with high precision.

Ordering Code

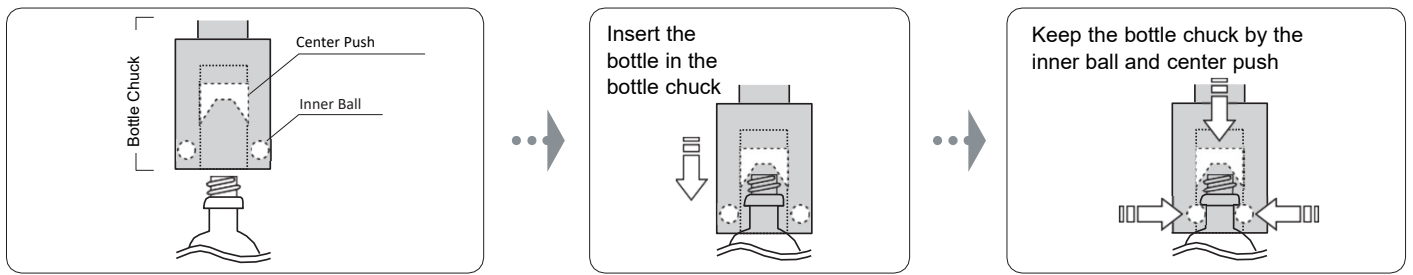
CH B524 - NO - K - SH2



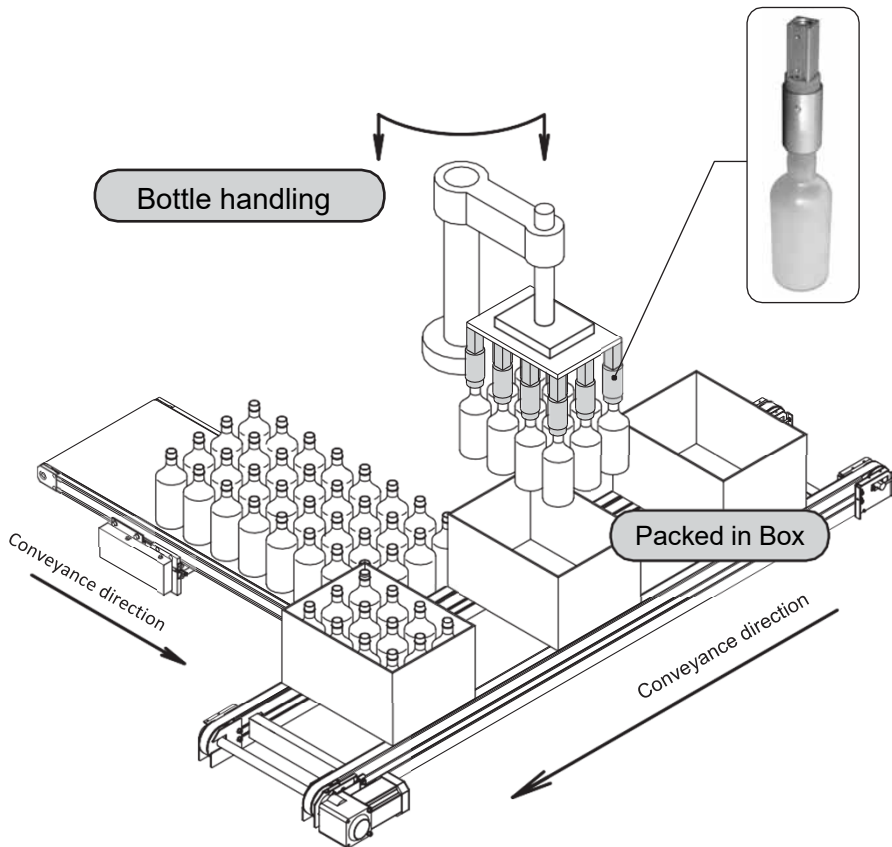
*1 Please indicate "K", in case of your order with special specification under special circumstances.

*2 Select the name "B524" when the bottle dia. Is Φ10~30 and weight is under 1.5kg
 Select the name "B526" when the bottle dia. Is Φ30~35 and weight is under 2kg
 Contact us about other specification.

Holding way



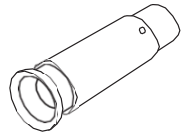
The use image



Customized Examples

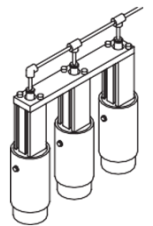
① In case that the pin's position not stable before holding

Customized the bottle's mouth to big, if it's off the point. So that it can hold accurately.



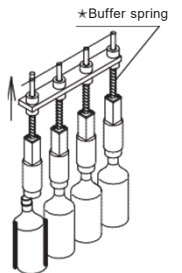
② In case of having the problem that there is an airport sideways

Customized the airport position to supply from Upper side of bottle chuck



③ In case that there is possibility to interfere chuck and pin each other

When the bottles are taken from the box, bottles are leaning or falling down and chuck and pin sometimes interfere each other. We offer you the attachment with buffer function to prevent damage of bottle or equipment.



④ In case that can't use air machine

We offer you the bottle chuck of mechanical drive



Specification

Name	CHB524-DO	CHB524-NO	CHB526-DO	CHB526-NO
Working Method	Filtered Air			
Operating Pressure (P)MPa	0.3~0.7			
Ambient Temperature °C	5~60			
Lubrication	Not Required			
Repeating Accuracy mm	± 0.3			
Life of the goods time	2 million (Under the condition that			
Cylinder dia. mm	Φ 20		Φ 30	
Stroke mm	5		6.5	
Exhaust volume cc	4.7		14.8	
Max. cycle per minute time/s	60			
Finger's movement	Double acting*3 (Normally close)	Single acting (Normally open)	Double acting*3 (Normally close)	Single acting (Normally open)
Gripping force N	1746 x P +46	1746 x P -126	3928 x P + 17	3928 x P - 3
Weight kg	0.4		0.6	

*3 : It has a spring which prevent the bottle from falling when air is stopped.

*4 : The weight is difference depending on the materials and shape.

