



Air Gripper with lightness and high power!

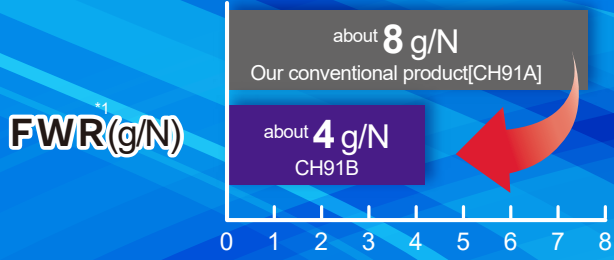
Our original technic
Patent applied for

Parallel type Square Gripper : CH91B

Cut the weight by half ! And FWR^{*1} by half !



not in use of copper and aluminium parts at all



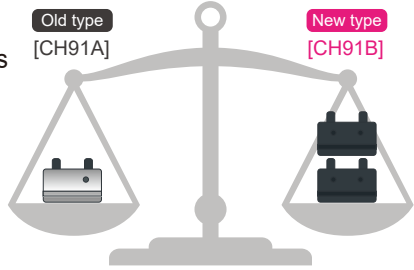
*1 Force-weight ratio : actual weight per grip force 1N

Rise Force-weight Ratio and improve production efficiency!!

Point 1 Broaden the capable for robot's transport

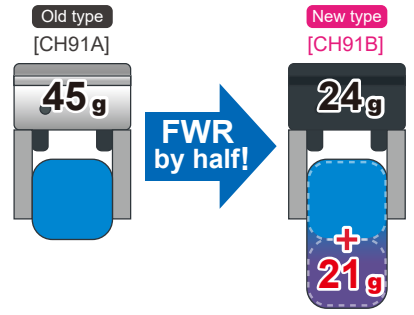
The weight of air gripper attached to the machine's tip is

Half weight
of old type

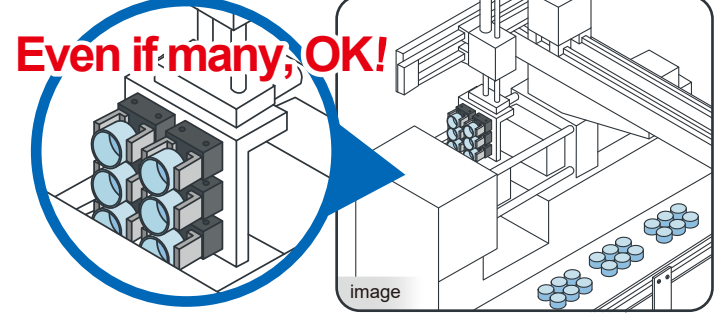


so...

can carry more heavier works!



Point 2 Enable to grip more works

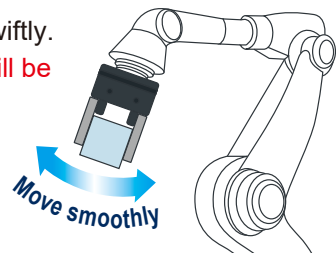


You can use more air grippers by reducing the total gripper's weight significantly that is attached to the machine's tip.

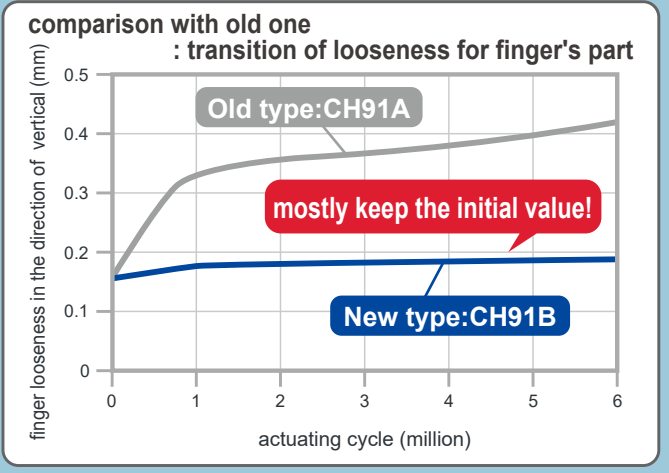
And more
Less looseness of finger parts
and reduce the time for finger's adjustment

Point 3 When temporarily suspended, more accuracy

CH91B is so light and move swiftly. If more accuracy, less time will be taken to next movement.



Shorten the takt time!



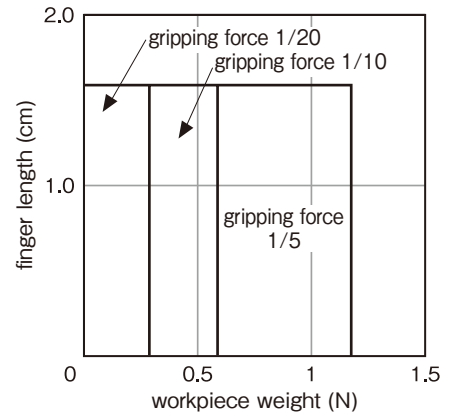
Standard Model

CH91B - SH2

option

Type		no mark		no sensor	
CH91B	Cylinder bore $\phi 6$	Proximity switch	SH1	NSH-24V	attached one piece of sensor (detection of open or close)
			SH2	NSH-24V	attached two pieces of sensor (detection of open and close)

Criterion chart



Specification

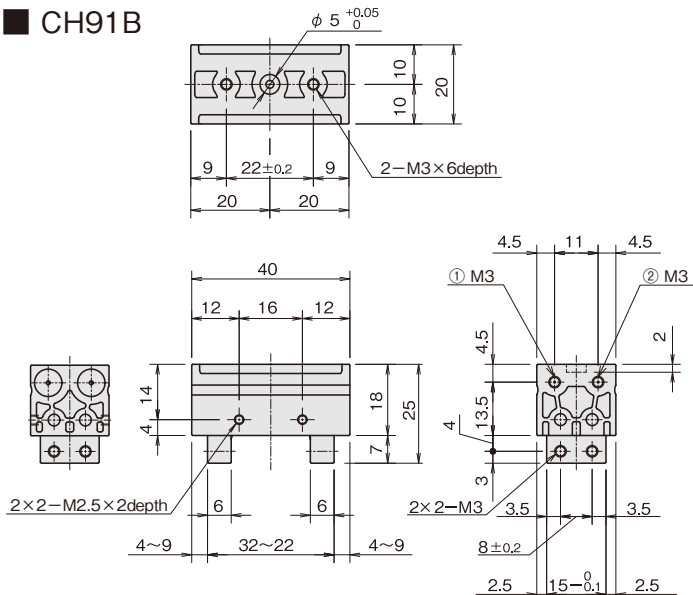
Working media		Filtered air
Operating pressure (P)	MPa[kgf/cm ²]	0.3~0.7{3~7.1}
Ambient temperature	(°C)	5~60
Lubrication		Normally not required (But if necessary, use 1st sort of turbine oil equivalent of ISO VG32)
Repetitive accuracy	(mm)	Initial value : ± 0.1 , At 2 million cycles : ± 0.2
Cylinder bore	(mm)	6
Stroke	(mm)	10
Exhaust volume	(cc)	0.16
Max. cycle per minute *1		90
Finger's movement		Double acting
Gripping force: Close, Open *2	(N)	18 x (P-0.18) P: operating pressure(MPa)
Weight	(g)	24
Max. length of attachment from finger end *1 (cm)		1.6
Max. weight of one attachment *1 (g)		15

*1 Variable by the working condition.

*2 1N \approx 0.102kgf

Dimensions chart

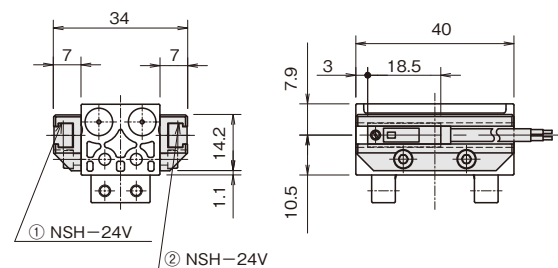
CH91B



option

sensor detected for finger's open and close (Reed switch)

①	Air port (close)
②	Air port (open)



*3 Please connect the tubing to air port (close) sensor, because SH1(NSH-24V) is attached to air port (open) .

NKE株式会社 [旧社名(株)中村機器エンジニアリング]

NKE Corporation

◆Head office
366-1, Hishikawa-cho, Hazukashi, Fushimi-ku, Kyoto
612-8487, Japan
Tel : 075-924-3293
Fax : 075-924-3290

◆URL=<https://www.nke.co.jp>
◆E-mail: promotion@nke.co.jp

- For technical questions, please contact us by E-mail at <promotion@nke.co.jp>.

- Our Internet Website <<https://www.nke.co.jp>>.

- The contents of this document are subject to change without notice.

©2019 NKE Corporation

L-CH1907310KE