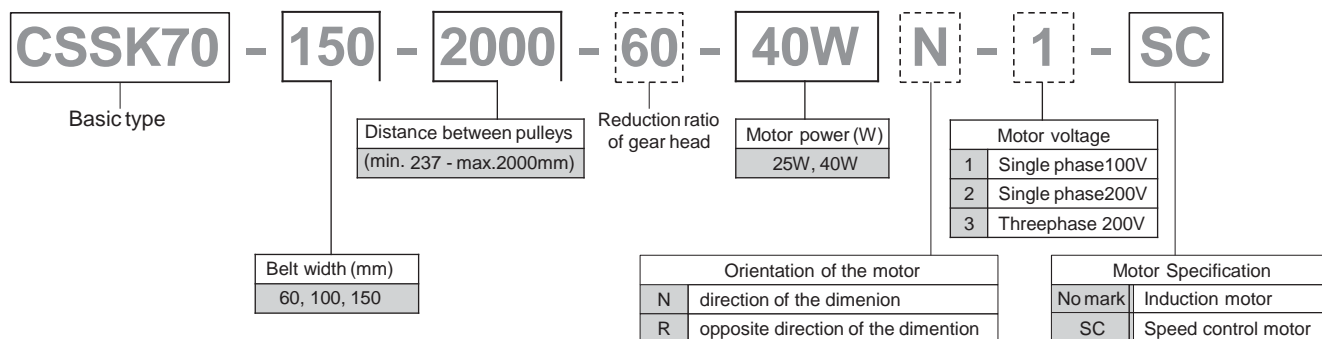


Heat Resistance Conveyor CSSK70

- This heat resistance conveyor can convey parts with high temperature up to **230 degrees**
- By using special textile material belt with crosspieces on back side to prevent running Zigzag, this conveyor is possible to run stably



Ordering Code



■ Gearhead Reduction Ratio and Conveyance Speed

Reduction ratio of gear head		12.5	15	18	25	30	36	50	60	75	90	100	120	150	180
Transport speed (m/sec)	50Hz	0.440	0.367	0.305	0.220	0.183	0.153	0.110	0.092	0.073	0.061	0.055	0.046	0.037	0.031
	60Hz	-	0.440	0.367	0.264	0.220	0.183	0.132	0.110	0.088	0.073	0.066	0.055	0.044	0.037

The above chain speed shows without the load, therefore, it shall be calculated to reduce 2~15% from the chart according to the load

Specification

■ Weight (kg)

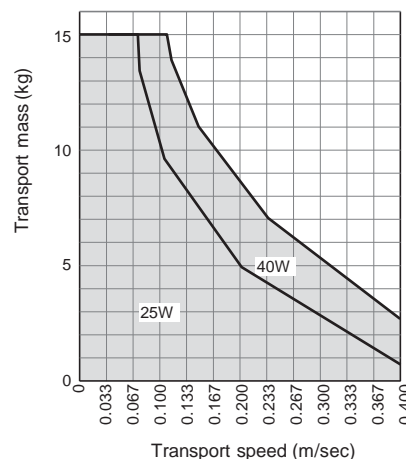
Belt Width	Distance between pulleys (mm)				
	237-500	501-750	751-1000	1001-1500	1501-2000
60	8.3	9.7	12.8	14.8	16.8
100	9.5	11.0	14.2	16.3	18.5
150	11.0	12.7	15.9	18.2	20.5

The above shows the maximum weight of distance between each pulleys

■ Belt Specification

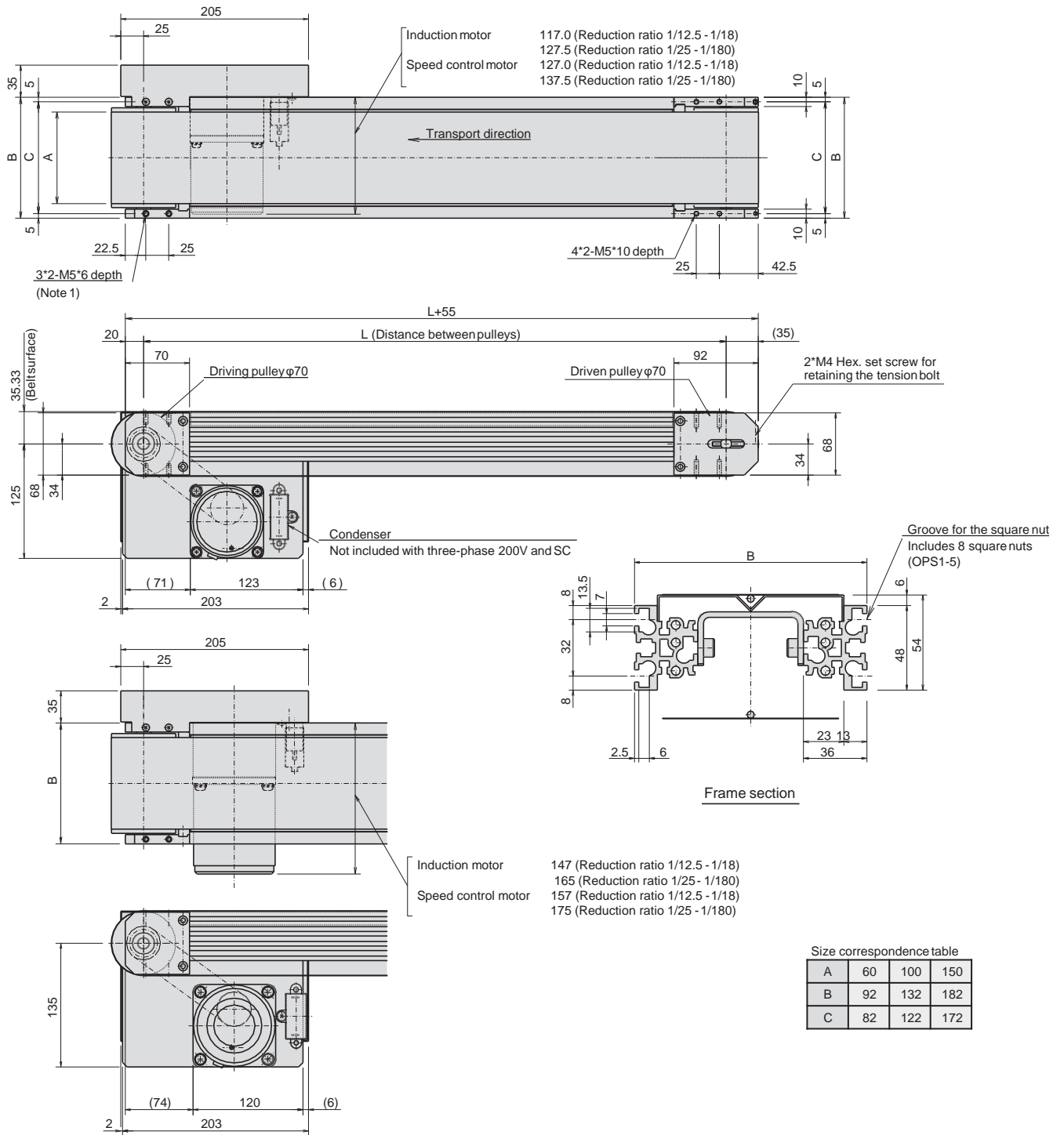
Heat resistance	230 degrees
Antistatic properties	No
Food hygiene	○
Material	Plain weave coated with fluororesin on aramid fiber
Color	Brown
Thickness	0.363mm
Maker	Honda sangyo corporation HAS-P510 (with crosspieces on back side)

■ Conveyance capacity



The graph shows total conveyance capacity without accumulating the work. When the it is accumulating, the belt surface will be wear early.

Dimension



(Note 1) The bolt shall not be used with which screwed more than 6mm.



Safety precautions

- Read the instructions before using this product
- Please use within the specification designated by the catalog and instructions

NKE Corporation

◆ Head office Works

366-1, Hishikawa-cho, Hazukashi, Fushimi-ku, Kyoto, Japan

◆ E-mail

promotion@nke.co.jp

◆ HP

<https://www.nke.co.jp/>

◆ Please kindly understanding for changing the contents of this leaflet without your approval.

©2021 NKE Corporation

P-CS211029AE