

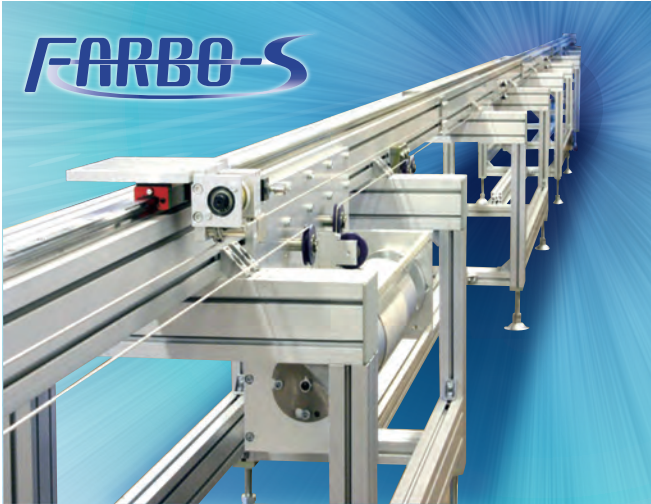
High speed shuttle of wire drive

# FARBO-S

**High speed**

**continuous length**

**Multiple**



- 1 Maximum speed 5,000mm/sec**  
 By adopting a wire drive system, conveyance with high speed becomes reality. It is also possible to cut cycle time.
- 2 Maximum stroke 10,000mm**  
 Can adjust to 100 mm intervals between 4,000 and 10,000 mm. (It is also possible to customized order systems with 1 mm pitch intervals)
- 3 Multiple conveyance with plural shuttles**  
 By mounting multiple independent driven shuttles on the same rail, cycle time is shortened and the number of work-in-process is reduced.

**New development**

## Loaded with auto-tension

Enable to use with no maintenance for stretching wire.  
 \*Stretch of wire can be absorbed by doing origin return regularly.  
 Farbo-S can support your manufacturing site.



Farbo-S can support your manufacturing site.



## Ordering Code

**FARBO-S - H2 - 1 - 5000 - 5 - 750W - 3 - FT**

Basic type

The number of shuttle  
1, 2, 3, 4

Reduction ratio of gear head  
5, 9

Motor voltage (Third phase)  
3 Three phase 200V

Stroke (mm)  
4000 to 10000  
(100mm unit)

Motor power (W)  
750W

Option for stand	
No mark	No
FT	Yes

\* We can manufacture depending on your stroke, conveying surface height, etc.

Mark	Floating mechanism	Option for positioning	Repetitive stop accuracy
No mark	No	No	±0.5mm
H0	Yes		
H□ *		Yes	Yes

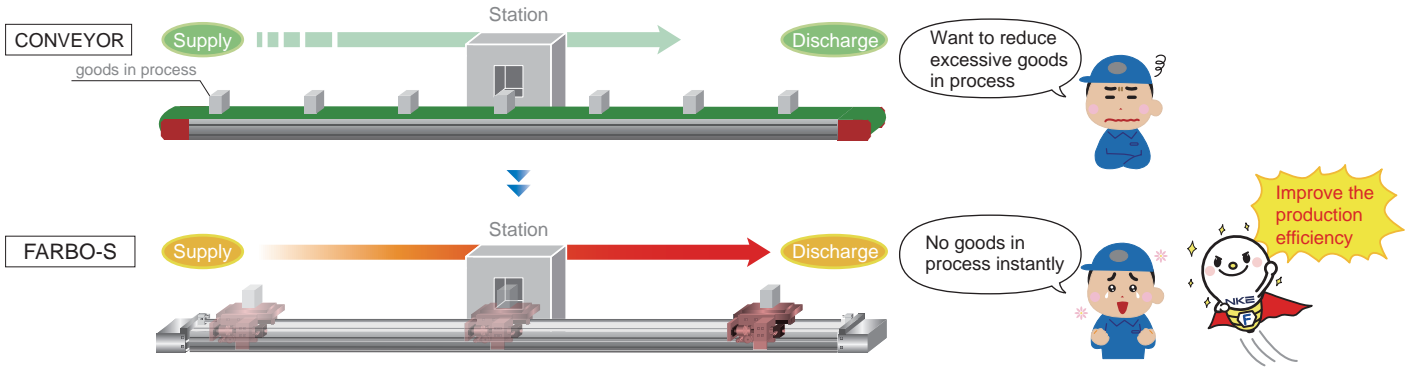
\*put the number of option for positioning

This product will be delivered with servo motor and reduction gear  
 Please select servo amplifier, cable and so on depending on your specification at your side.

# Application

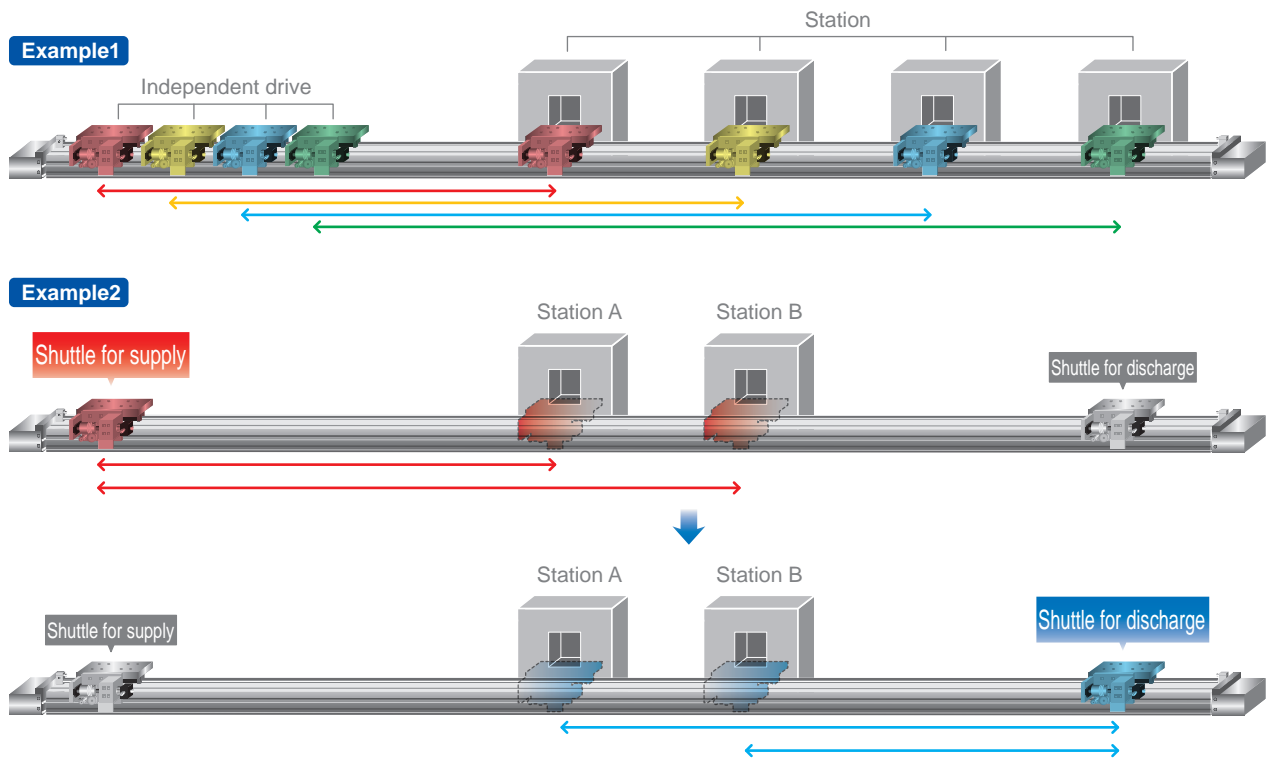
## 1. Reduce goods in process

Even if the long length, it's possible to reduce goods in process and shorten the cycle time.



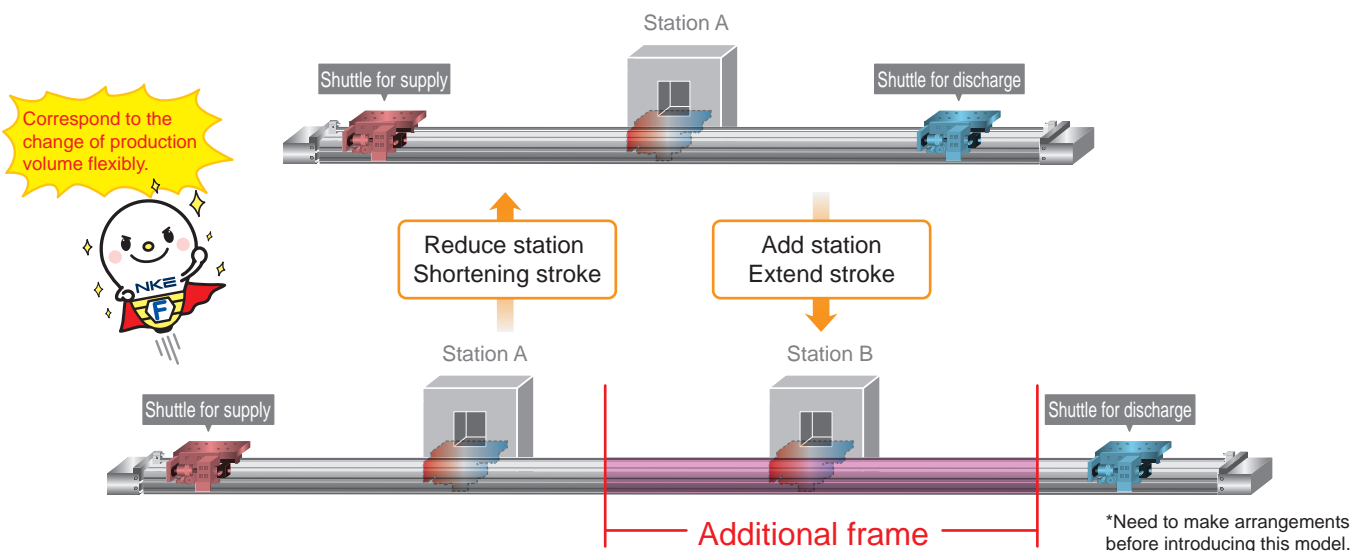
## 2. Realize independent drive of plural shuttles

Some independently drive shuttles can be equipped on the same rail. It's possible to input the same parts to plural stations (example 1) or to divide into supply shuttle and discharge shuttle (example 2)



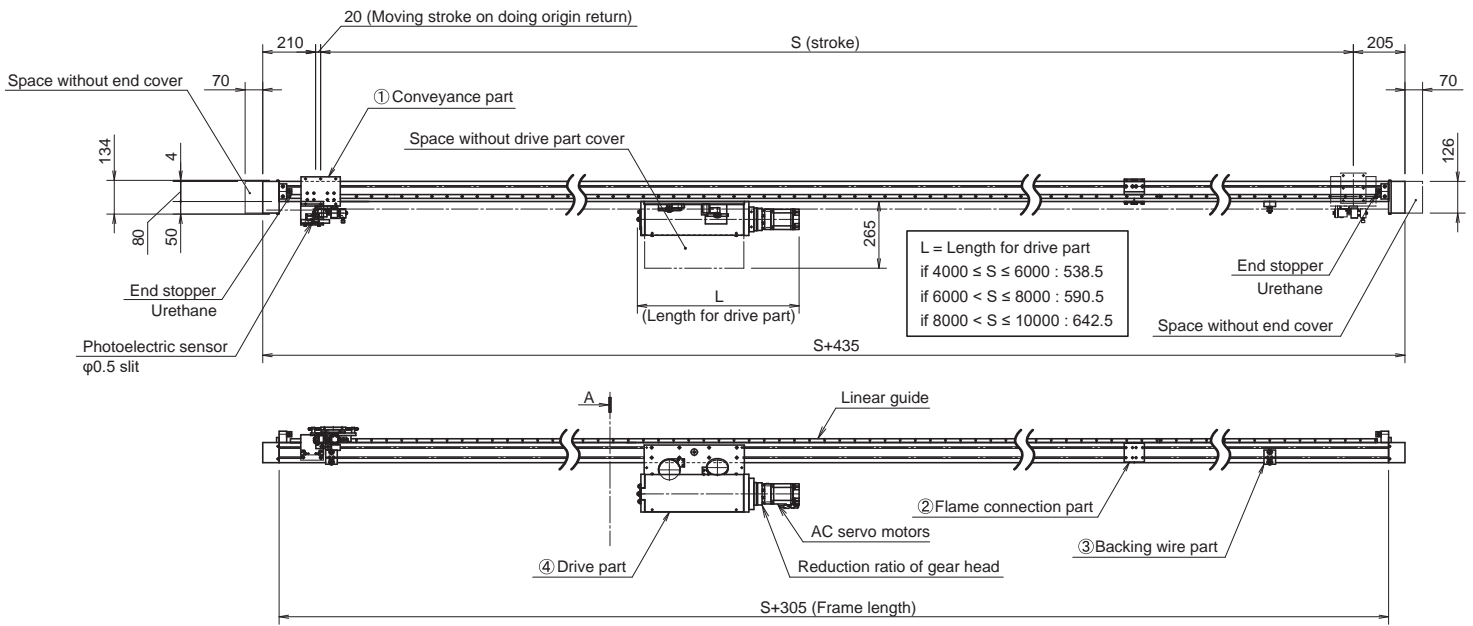
## 3. Enable to extend or shorten the stroke

Enable to extend or shorten the stroke by adding or shortening the frame. Can deal with the change of production volume by changing the layout.

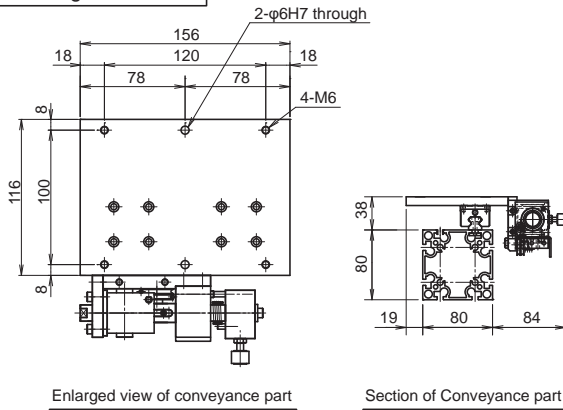


# Dimension

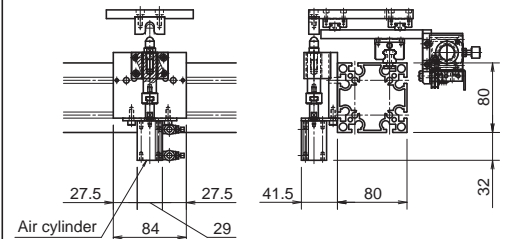
- \* Drive part is arranged with avoiding the interfection of frame connection or stand.  
It's favorable that drive part is arranged in center for life-span of wire.
- Please contact us if you want to arrange drive part on side
- \* ②, ③ is changed the number of installing by the stroke.



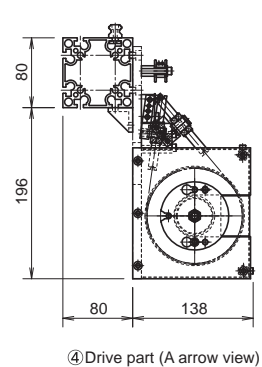
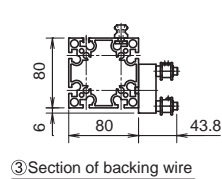
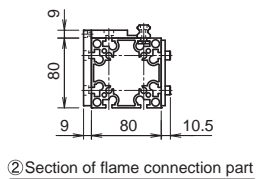
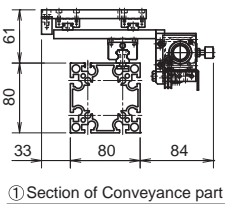
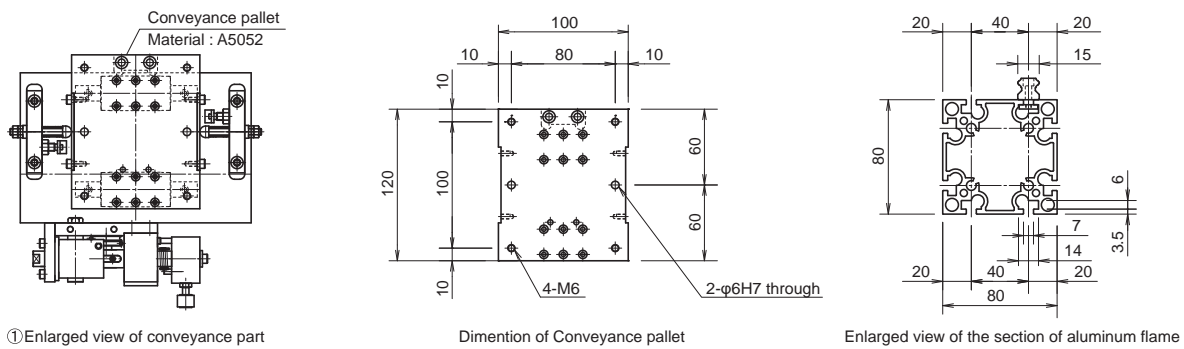
## No floating mechanism



## Positioning option

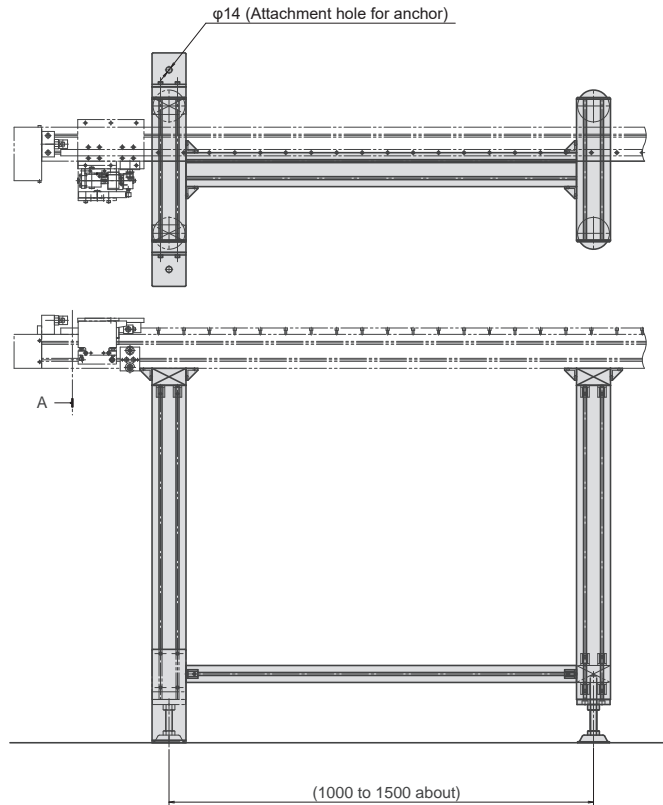
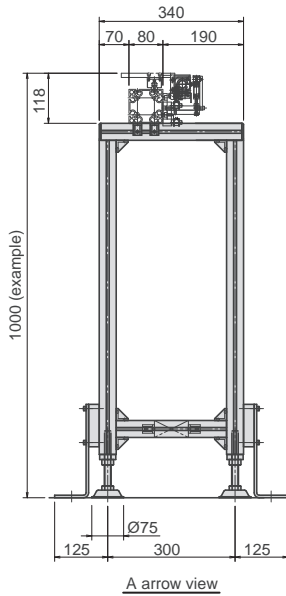


## Floating mechanism



## Dimension for Stand

This chart is for reference. We can draw the chart depending on width and high whatever you want.



## Shuttle moving time table

Reduction ratio of gear head 5 per sec.

		Stroke(mm)			
		4000	6000	8000	10000
Conveyance weight (kg)	2	1.3	1.7	2.1	2.5
	4	1.5	1.9	2.3	2.7
	6	1.7	2.1	2.5	2.9
	8	1.9	2.4	2.8	3.2
	9	2.0	2.5	2.9	3.3

Reduction ratio of gear head 9 per sec.

		Stroke(mm)			
		4000	6000	8000	10000
Conveyance weight (kg)	2	1.9	2.7	3.5	4.3
	4	2.0	2.8	3.6	4.4
	6	2.1	2.9	3.7	4.5
	8	2.2	3.0	3.8	4.6
	10	2.3	3.1	3.9	4.7
	12	2.5	3.3	4.1	4.9
	14	2.6	3.4	4.2	5.0
	16	2.8	3.6	4.4	5.2
	18	3.0	3.8	4.6	5.4
	20	3.2	4.0	4.8	5.6

Note 1 About maximum 0.5 sec late depending on your setup or conveyance conditions.

Note 2 Take about each 0.2 sec for doing On/Off of positioning, in case of doing option for positioning.

## Specification

Drive system	wire	
Motor specification:	Mitsubishi Electric Servo motors "HG-KR73"	
Reduction ratio of gear head	1/5	1/9
Maximum conveyance weight(kg)	9	20
Top speed(mm/s)	5000	2500

Click here for FARBO-S video

Can check the product's video or application and so on.

<https://nke.co.jp/product/new/farbo-s.html>



### Safety precautions

- Read the instructions before using this product
- Please use within the specification designated by the catalog and instructions

# NKE Corporation

### ◆ Head office Works

366-1, Hishikawa-cho, Hazukashi, Fushimi-ku, Kyoto, Japan

### ◆ E-mail

[nke.vietnam@nke.co.jp](mailto:nke.vietnam@nke.co.jp)

### ◆ HP

<https://www.nke.co.jp/>